



## INSTRUCTION MANUAL

### PROPOLOGY



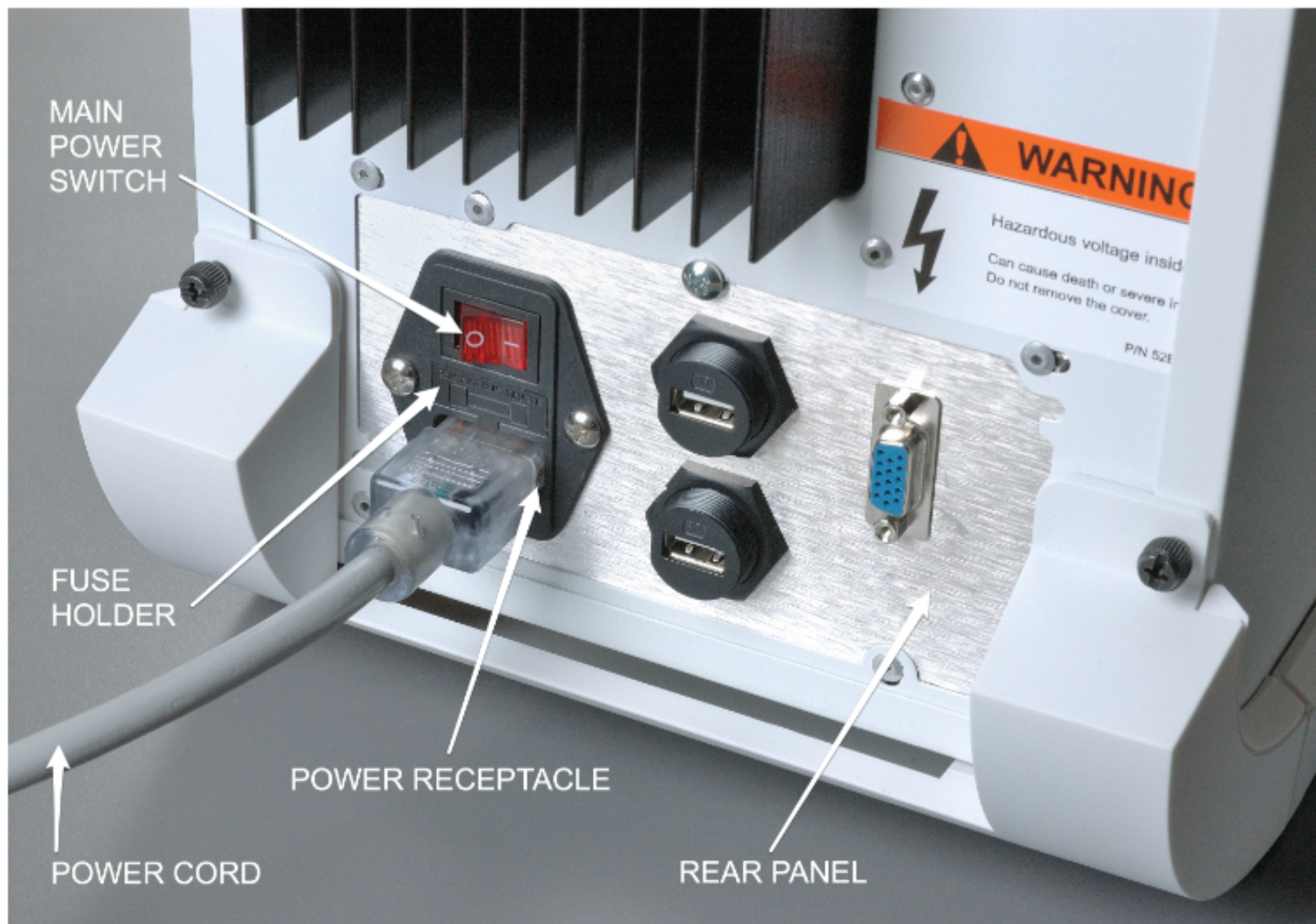
## ***Simulated Tabletop Scanning Electron Microscope Rabehl Scientific TT-1B***

### ***TERMS AND CONDITIONS OF USE***

- NO PRODUCT WARRANTY IS EXPRESSED OR IMPLIED. ALL MANUFACTURED ITEMS ARE PROVIDED "AS-IS".
- PROPOLOGY (MOLNAR MOTION PICTURE PROPS, INC.) WILL NOT BE HELD RESPONSIBLE FOR ANY LOSS OR DAMAGE RESULTING FROM THE USE OR HANDLING OF MANUFACTURED ITEMS BY PRODUCTION PERSONEL, OR AGENTS THEREOF.
- The END USER is solely responsible for determining the suitability of any given MANUFACTURED ITEM, for any particular PRODUCTION PURPOSE.



## Setup Procedure



Rear Panel

- 1 - Place the unit on a firm, level surface, with a minimum of 7 inches clearance from the front panel.
- 2 - Plug in the provided POWER CORD into the receptacle located at the rear panel.
- 3 - Turn on MAIN POWER by pressing the MAIN POWER SWITCH located above the POWER RECEPTICLE. The switch should then illuminate to indicate that power is "ON".

### **IF THE MAIN POWER SWITCH DOES NOT ILLUMINATE WHEN PRESSED**

- Check to ensure that the POWER CORD is fully inserted into the POWER RECEPTICLE.
- Check that the power cord is plugged into a live power source.
- If an extension cord is employed, ensure that it is properly connected to the POWER CORD and power source.
- Ensure that a suitable buss fuse (5-amp, FAST-BLOW) is installed into the FUSE HOLDER located between the POWER RECEPTACLE and the MAIN POWER SWITCH.



# PROPOLOGY

## *Simulated Specimen Preparation and Scanning*



Front Control Panel

**Once setup is complete, and MAIN POWER is on, the unit is ready normal operation.**

The following indicators should be illuminated: "START", "SYS", "LARGE SCALE", "EVAC", and "OPEN/CLOSE". If the "SCAN IN PROGRESS" indicator is on, press the "START" button once, to reset it (and will go dark).

**The procedure for simulated operation is as follows:**

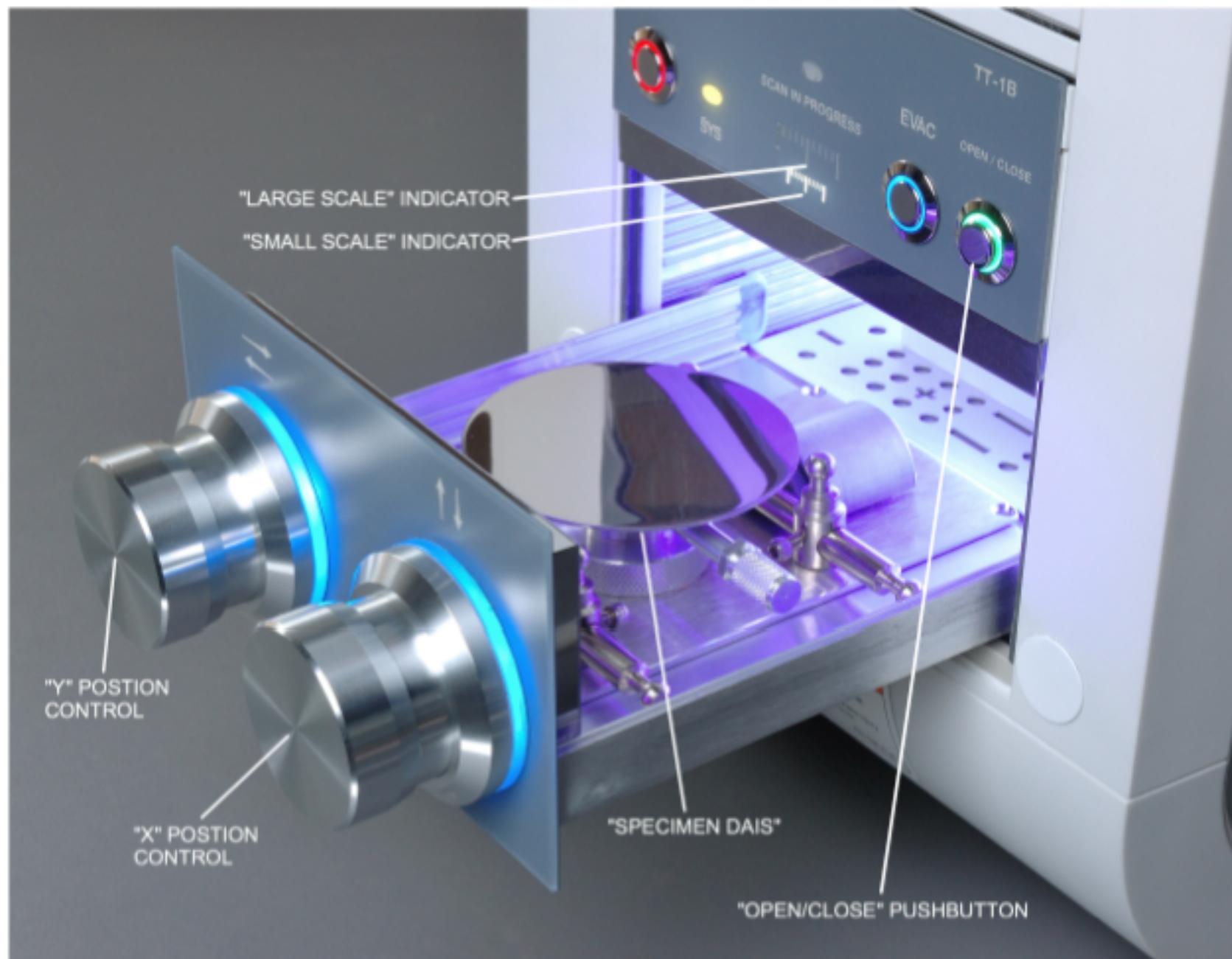
- 1 - Press the "OPEN/CLOSE" button once, to open the SPECIMEN CHAMBER.
- 2 - Place the prepared specimen onto the SPECIMEN DAIS (see image, next page).
- 3 - Press the "OPEN/CLOSE" button again, to close the SPECIMEN CHAMBER.
- 4 - Press the "EVAC" button once, to simulate evacuation of atmosphere from the SPECIMEN CHAMBER. Both the the "START" and "EVAC" indicators will flash four seconds. Once the flashing has stopped, the simulated scan can proceed.
- 5 - Pressing the "START" button will illuminate the "SCAN IN PROGRESS" indicator.

**This is when a simulated electron microscopy image should be cued to appear on the computer monitor.**



# PROPOLOGY

## Simulated Specimen Preparation and Scanning



Specimen Chamber Open

**If the displayed image depicts tracking movement, simulated operation of the relevant controls are as follows:**

- Left-to-right, and in-and-out tracking, is accomplished by turning the Y"-POSTION" and X"-POSTION "controls respectively.
- Pushing either POSTION CONTROL will cause the "LARGE" and "SMALL" scale indicators to toggle (from one to the other) simulating selection of course or fine scale movement of the SPECIMEN DAIS (to suit the action depicted on the computer monitor).

**To terminate a scan, press the "START" button again. This will extinguish the "SCAN IN PROGRESS" indicator. To open the SPECIMEN CHAMBER once scanning is completed:**

- Ensure that the "SCAN IN PROGRESS" indicator is not illuminated.
- Press the "EVAC" pushbutton. This will cause the "START" and "EVAC" indicators to flash four seconds (this step simulates repressurizing of the SPECIMEN CHAMBER, but can be omitted if necessary).
- Press the "OPEN/CLOSE" pusbutton, once the above indicators have stopped flashing. This will open the SPECIMEN CHAMBER.





**TT-1B**



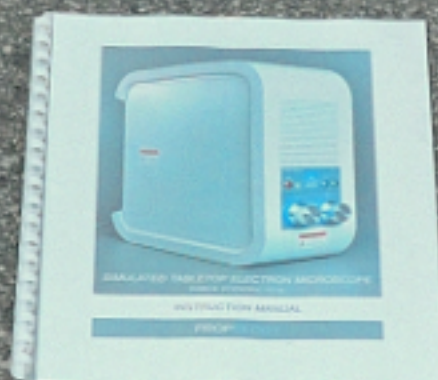
**CARTON**



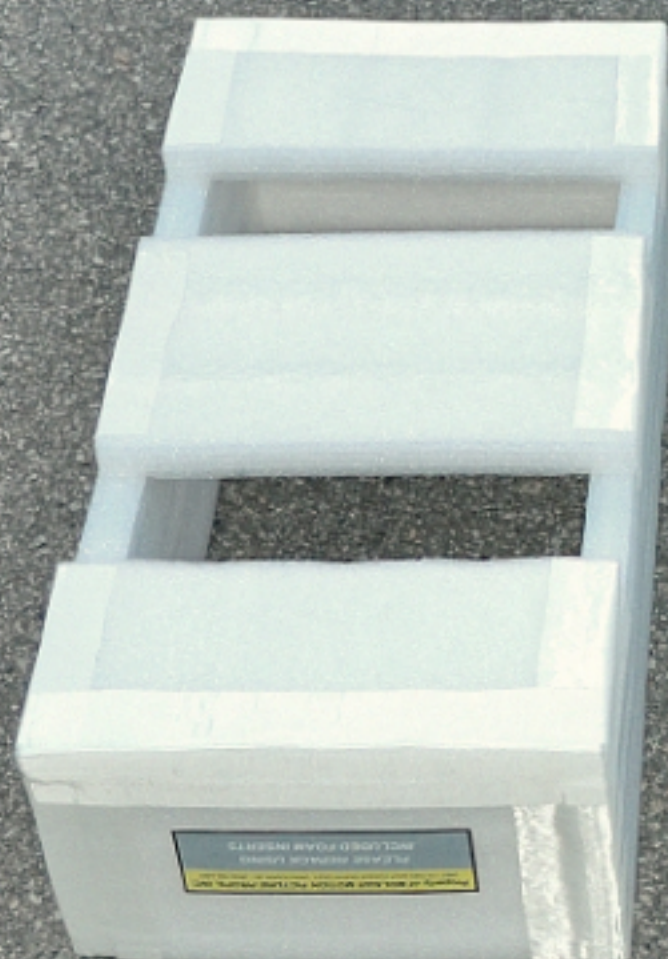
**SLING**



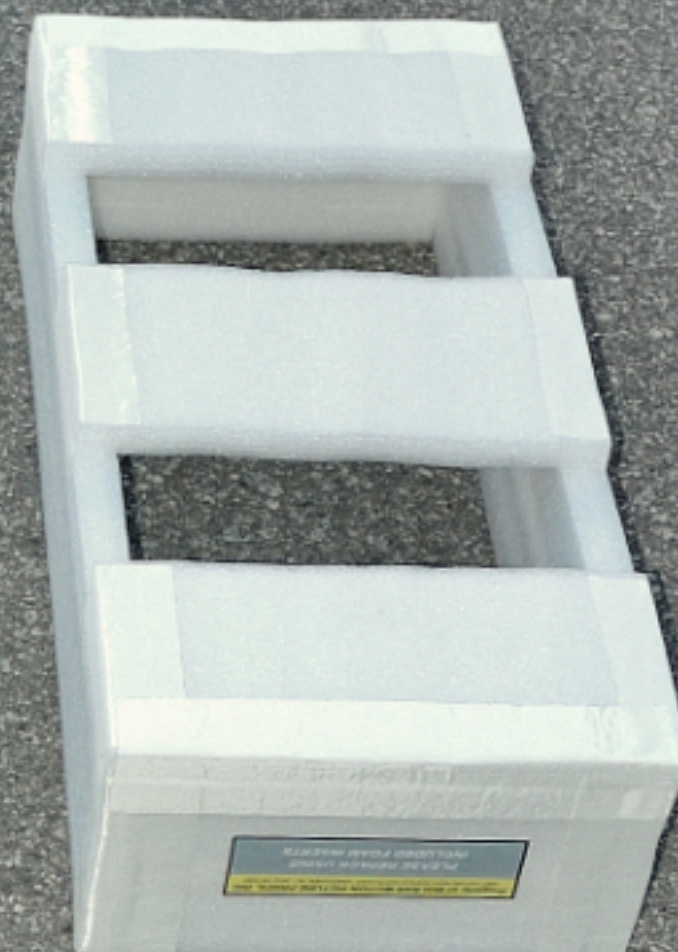
**POWER CORD**



**MANUAL**



**END PACKING**



**END PACKING**



**TOP PACKING**

# Package Contents

Unit Serial Number: 0856723 07